

A Venture of SKB Vidhyashram Group of Schools

META MORPH



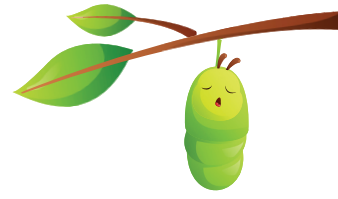
Growing Wings For Tomorrow

(Born from IIM. Built to Transform the World)



Play, Learn, Grow - Together!

Inspiring little learners at
METAMORPH
PRE-SCHOOL!



Metamorph - an inclusive preschool brand, inspired and nurtured at IIM Bangalore through the Goldman Sachs Women Entrepreneurship Program. What began as an idea during the program has now evolved into a growing network of preschools that celebrate inclusion and innovation in early education.



Awarded as
**Top Preschool in
India by ECDLA**



METAMORPH
PRE-SCHOOL!

"Building bright futures through kindness,
creativity, and care."

Nurturing bright futures at

METAMORPH

PRE-SCHOOL!

Metamorph Pre-School was founded by Dr. Manjupriya Marisamy to redefine early education through love, learning, and inclusion. With expertise in child development and psychology, she envisioned a space where every child—neurotypical or with special needs—feels valued and confident. At Metamorph, learning is a joyful journey of discovery. Our play-based, sensory-rich curriculum builds strong emotional, cognitive, and social foundations, blending traditional values with modern research.



Backed by SKB Vidhyashram and Veerammal Educational Trust, we ensure personalized growth through Individualized Education Plans (IEPs) and 360° progress tracking. Recognized nationally as the Top Preschool in India (ECDLA), Best Inclusive Preschool (Global Educators Conclave), and Changemaker in Early Years Education (EYES 2025) — Metamorph stands for trust, care, and inclusive excellence.

METAMORPH

PRE-SCHOOL!

“Where every child blossoms through inclusion and discovery.”

Why choose **METAMORPH?**

Comprehensive enrollment and marketing assistance to help every partner grow confidently.



**BEST-IN-CLASS
BUSINESS SUPPORT**

**BACKED BY THE LEGACY OF
SKB VIDHYASHRAM**



A trusted brand with a strong educational foundation and reputation for excellence.

Structured training programs to ensure consistent quality and child-centric teaching.



**COMPREHENSIVE
FACILITATOR TRAINING**

**13+ YEARS OF
EXCELLENCE | Presence in
15+ CITIES**



A proven track record of success & trust built across multiple locations.

Technology-driven systems for smooth administration and real-time tracking.



**SMART BUSINESS
MANAGEMENT PLATFORM**

**MOST ADVANCED
LEARNING PEDAGOGY**



Comprehensive enrollment and marketing assistance to help every partner grow confidently.

A time-tested model designed for sustainable growth and long-term success.



**PROVEN & PROFITABLE
BUSINESS SUPPORT**

BRIGHT BEGINNINGS
for little dreamers.

What Makes You a Distinctive Leader with **METAMORPH?**

Partnering with Metamorph Preschool means joining a movement toward futuristic, inclusive, and globally benchmarked education. Our proven framework equips you with the tools, systems, and innovation to lead in today's evolving learning landscape.

FUTURISTIC & INCLUSIVE EDUCATION MODEL

A next-generation approach that integrates inclusion, technology, and experiential learning for holistic development.

Curriculum aligned with global best practices and NEP 2020 guidelines, ensuring every child learns with purpose, creativity, and global awareness.

INTERNATIONAL ACADEMIC FRAMEWORK

Metamorph equips every franchise partner to become a transformational education leader, blending empathy, innovation, and enterprise into one powerful vision.

EMPOWERING YOU AS A VISIONARY LEADER

BEYOND SCHOOL LEARNING OPPORTUNITIES

Value-added programs like After-School Robotics, enrichment activities, and extended classes that foster innovation and ensure financial stability for partners.

SCHOOL READINESS & SEAMLESS OPERATION

Comprehensive academic planning that transitions effortlessly from preschool to K2 and K5 levels, promoting continuity and excellence.

End-to-end academic assistance with daily lesson guidance, monthly and quarterly audits, and continuous quality checks.

STRUCTURED ACADEMIC & BUSINESS SUPPORT

A dedicated mobile application to monitor academics, parent communication, and operational efficiency in real time.

DIGITAL INTEGRATION FOR SMART MANAGEMENT

TRANSFORMING EDUCATION
with vision and purpose.

Our programs cater to diverse age groups, ensuring a progressive learning journey.



Each program integrates child wellness, inclusivity, and personalized learning to foster cognitive, emotional, and social growth.



State-of-the-Art Facilities

Spacious classrooms, outdoor play areas, activity zones, sensory play setups, libraries, and CCTV-monitored safety.

Advanced Educational Tools

Montessori materials, STEM resources, and interactive learning aids for engaging academic experiences.

Inclusive Curriculum

Designed with the Metamorph NCF framework focusing on holistic child development and wellness.



TAILORED LEARNING
for every milestone.

OUR FRANCHISE MODULES

Student Kit Based on enrollment strength

- ▶ **Educational Supplies** ▪ Book Set, School Bag, Notebooks
- ▶ **Uniforms** ▪ 3 Set of Uniforms
- ▶ **Stationery Kit** ▪ Pencil, Clay, Crayons, Paints, Apron, Cap, ID Card, Smiley Ball



Note: Per-kit cost will be declared during the admission process based on final enrollment strength.

Perfect for new entrepreneurs

- Focused on affordability with basic facilities

Requirements

Space: 1500-3000 sq. ft. indoor + 500 sq. ft. outdoor

Location: Residential/near educational hubs

Facilities: Child-safe classrooms, Outdoor play area, CCTV safety

Silver
model

Franchise Fee
₹6 Lakhs

Total Investment
₹8 Lakhs
(approx.)

Royalty
5% per child
(annually)

An environment where
LEARNING MEETS PLAY



Perfect for semi-urban and smaller towns

- Efficient use of space and resources without compromising quality.
- Standardized Montessori and play-based equipment.
- Focused local marketing and operational support
- Regular staff training and audits to maintain quality.

Gold
model

Requirements

Space: 1500-3000 sq. ft. indoor + 500 sq. ft. outdoor

Location: Residential/near educational hubs

Facilities: Child-safe classrooms, Activity zones, Library, Outdoor play area, CCTV Safety

Franchise Fee
₹8 Lakhs

Total Investment
₹11 Lakhs
(approx.)

Royalty
4% per child
(annually)

Ideal for metropolitan and urban centers

- Spacious infrastructure (1500-3000 sq. ft)
- Fully equipped classrooms and outdoor play zones
- High-end facilities like projectors, safety systems, and modern activity kits
- Comprehensive marketing support, including online and local campaigns tailored for urban audiences.

Platinum
model

Requirements

Space: 1500-3000 sq. ft. indoor + 500 sq. ft. outdoor

Location: Residential/near educational hubs

Facilities: Child-safe classrooms, Activity zones, Library, Outdoor play area, CCTV safety

Franchise Fee
₹10 Lakhs

Total Investment
₹12 Lakhs
(approx.)

Royalty
2% per child
(annually)





Perfect for metropolitan and large city areas

- High visibility and premium infrastructure setup.
- Comprehensive digital marketing and admission support.
- Regular training programs and wellness-based education modules.
- Tailored campaigns and branch-specific promotional strategies.

Requirements

Space: 1500-3000 sq. ft. indoor + 500 sq. ft. outdoor

Location: Residential/near educational hubs

Facilities: Spacious classrooms, Activity zones, Sensory play areas, Library, Outdoor play area, CCTV monitoring

Emerald Model

Franchise Fee
₹15 Lakhs

Total Investment
₹ 20 Lakhs
(approx.)

NO
Royalty



WHY CHOOSE Metamorph Pre-School?

- Inclusive education with tailored interventions.
- Playful learning spaces combining tradition and modernity.
- Affordable investment with high returns.
- Backed by trusted educational institutions.



BUILDING BRIGHT FUTURES
Together.

OUR ESTEEMED FRANCHISEE HEROES



Mrs. Sarala
East Tambaram



Mrs. Abhinaya
Perungalathur



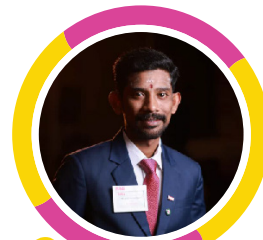
Mr. E. Karnal
Tambaram



Mrs. Lavanya
Urapakkam



Mr. Prabhakaran
Coimbatore



Mr. Jayachandran
Madurai



Ms. Sripradha
Madipakkam



Mr. Nagendra Pandi
Bodi

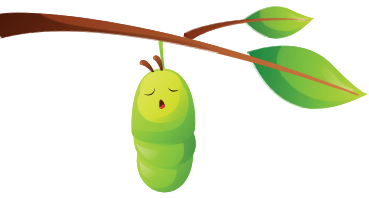


Mrs. Geetha Rani
Sankaran Kovil



Ms. Jayapriyadharshini
Selaiyur

PARTNER WITH US
to shape young lives.



**META
MORPH**

Growing Wings for Tomorrow
(A Venture of SKB Vidhyashram Group of Schools)

JOIN US

IN NURTURING THE LEADERS OF TOMORROW!



Together, Let's Create A Brighter Future.

Reach out to us for more details on Admissions, Franchise opportunities, and Partnerships.



+91 95976 86903 | info@metamorph.education | metamorph.education

No. 4/379, Saravanabhava Nagar, Near Parvathy Nagar Bus Stop, Old Perungalathur, Chennai - 600 063.